



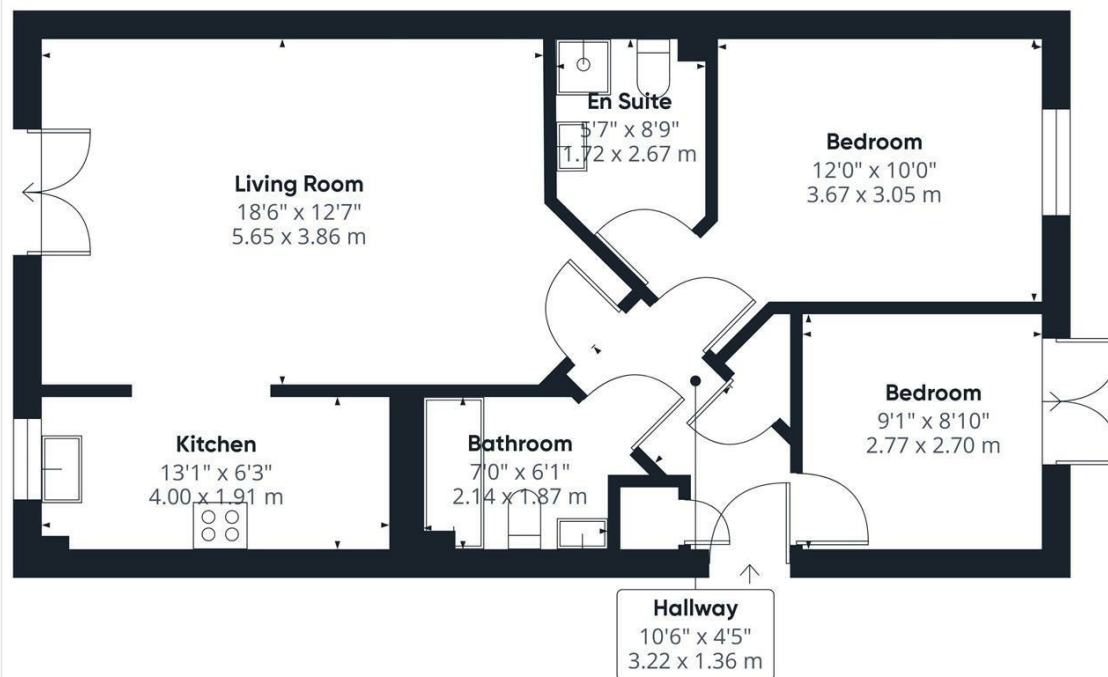
FLAT 22, BARNSHAW HOUSE COXHILL WAY

AYLESBURY, HP21 8FH

£220,000
LEASEHOLD

A two bedroom second floor apartment located within walking distance to the train station and town centre. Features include an en-suite, balcony, and allocated parking, offering convenience and comfort for modern living. Ideal for professionals or small families.





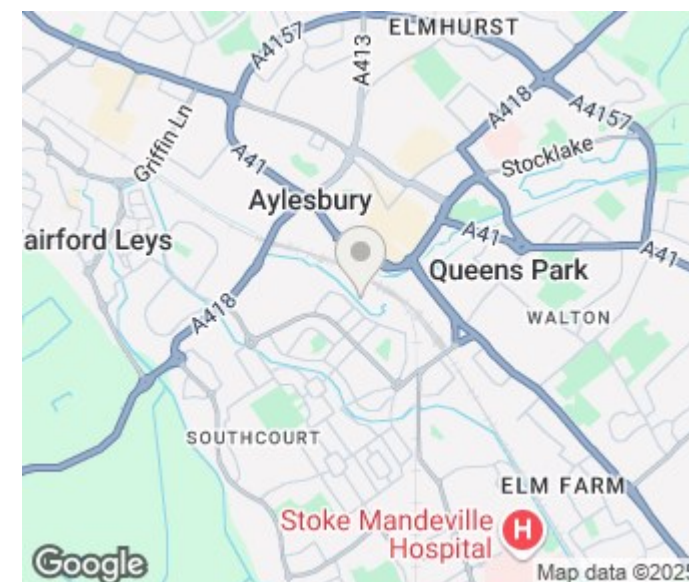
Approximate total area^m
682.87 ft²
63.44 m²

(1) Excluding balconies and terraces

While every attempt has been made to ensure accuracy, all measurements are approximate, not to scale. This floor plan is for illustrative purposes only.

Calculations were based on RICS IPMS 3C standard. Please note that calculations were adjusted by a third party and therefore may not comply with RICS IPMS 3C.

GIRAFFE360



Energy Efficiency Rating		
	Current	Potential
Very energy efficient - lower running costs		
(92 plus) A		
(81-91) B	81	81
(69-80) C		
(55-68) D		
(39-54) E		
(21-38) F		
(1-20) G		
Not energy efficient - higher running costs		
England & Wales	EU Directive 2002/91/EC	

Agents Note: Whilst every care has been taken to prepare these particulars, they are for guidance purposes only. All measurements are approximate and are for general guidance purposes only and whilst every care has been taken to ensure their accuracy, they should not be relied upon and potential buyers/tenants are advised to recheck the measurements

George David & Co
46 High Street
Aylesbury
HP20 1SE

01296 393 393
info@georgedavid.co.uk
www.georgedavid.co.uk

